

CHILD SEXUAL ABUSE STATISTICS: THE MAGNITUDE OF THE PROBLEM

PREVALENCE of Child Sexual Abuse

FACT:

Child sexual abuse is far more prevalent than most people realize. It is likely the most prevalent health problem children face with the most serious array of consequences.

- 1 in 4 girls experienced sexual violence.
- 1 in 10 boys experienced sexual violence before age 18.



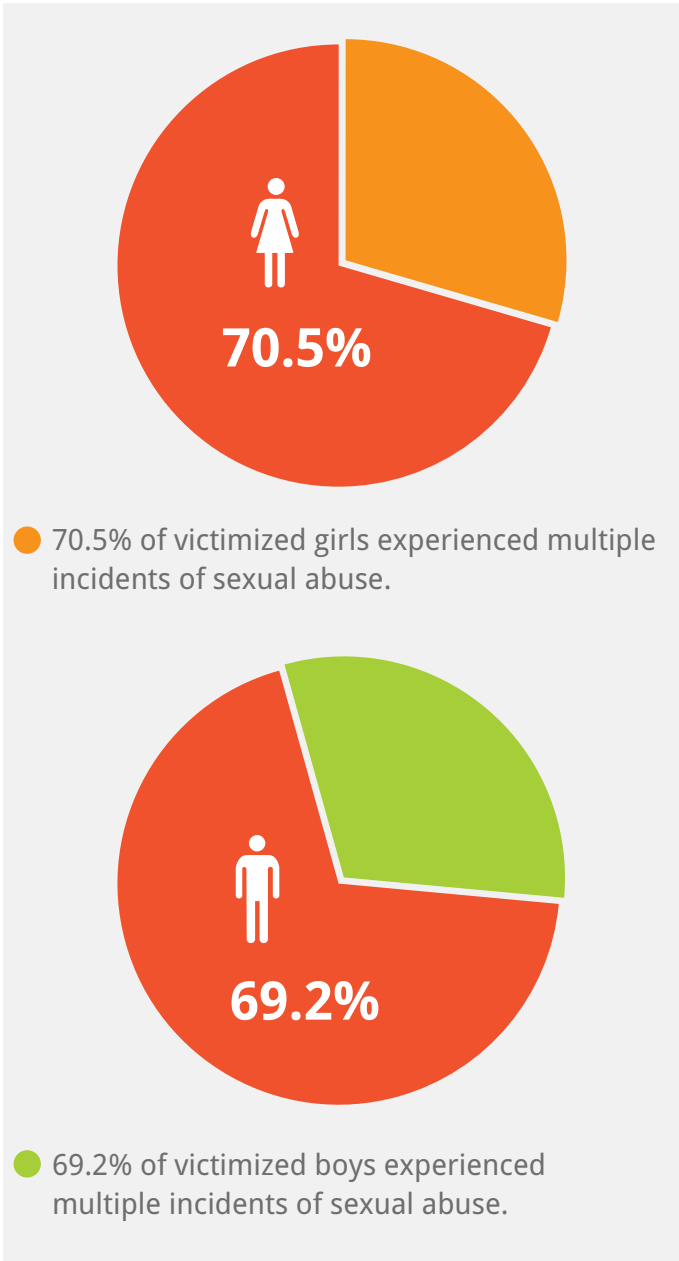
ONE IN 4 GIRLS EXPERIENCE SEXUAL VIOLENCE.



ONE IN 10 BOYS EXPERIENCE SEXUAL VIOLENCE BEFORE AGE 18.

- 1 in 8 girls experienced unwanted sexual touching.
- 1 in 10 boys experienced sexual violence before age 18.

- 1 in 9 girls experienced unwanted completed sex.
- 1 in 41 boys experienced unwanted completed sex.



- 70.5% of victimized girls experienced multiple incidents of sexual abuse.

- 69.2% of victimized boys experienced multiple incidents of sexual abuse.

- 1 in 4 girls reported that their first incident of sexual intercourse was unwanted.
- 1 in 10 boys reported that their first incident of sexual intercourse was unwanted.

INCIDENCE of Child Sexual Abuse



**ONE IN 6 GIRLS EXPERIENCE
SEXUAL VIOLENCE.**

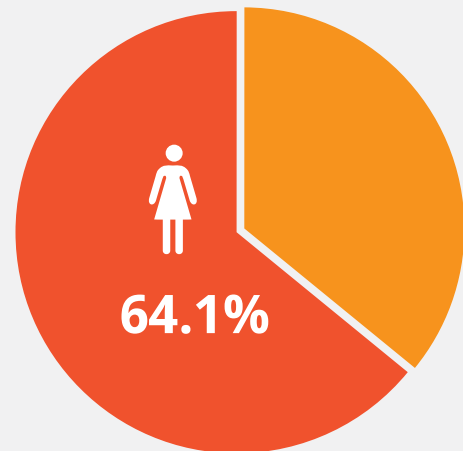


**ONE IN 12 BOYS EXPERIENCE
SEXUAL VIOLENCE BEFORE AGE 18.**

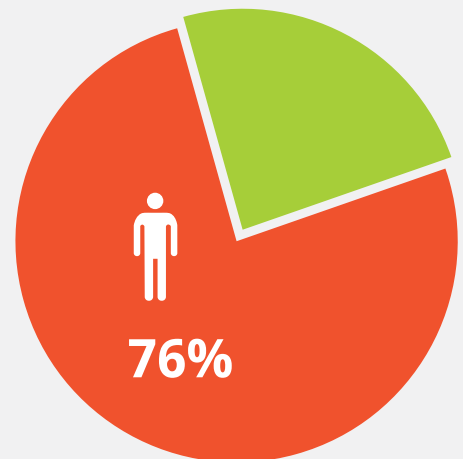
- 1 in 6 girls experience sexual violence.
- 1 in 12 boys experience sexual violence.

- 1 in 10 girls experience unwanted sexual touching.
- 1 in 13 boys experience unwanted sexual touching.

- 1 in 11 girls experience an unwanted sexual attempt.
- 1 in 52 boys experience an unwanted sexual attempt.



- 64.1% of sexually abused girls experience multiple incidents of sexual abuse.



- 76% of sexually abused boys experience multiple incidents of sexual abuse.

Reference

1. National Population Commission of Nigeria, UNICEF Nigeria, and the U.S. Centers for Disease Control and Prevention. *Violence Against Children in Nigeria: Findings from a National Survey, 2014*. Abuja, Nigeria: UNICEF, 2016.
2. Townsend, C. (2013). *Prevalence and consequences of child sexual abuse compared with other childhood experiences*. Charleston, S.C., *Darkness to Light*.